



Tractors

ELIOS

240 230 220 210





The easy way to get more done.

Your day-to-day work is determined by the weather, the livestock, the fields and your customers. It's not easy to plan for all these things. Especially when the bottom line is a successful harvest and a high quality product. We have developed our new compact tractors to help you achieve your goals. Versatile, efficient, comfortable and reliable – they make light work of your everyday tasks, reduce your costs and help you be more productive.

The compact ELIOS 200 is an intuitive tractor. Its robust technology feels familiar right from the start. It's easy to operate. With its low overall height, no shed is out of bounds. The low centre of gravity allows you to navigate hilly ground with confidence. In short: it's ready for action whenever you are.



ELIOS 240-210.

The choice is yours.



ELIOS 240

- 103 hp
- 3.6 l engine
- Cab without glass roof: overall height 2.40 m
- Cab with glass roof: overall height 2.51 m



ELIOS 230

- 92 hp
- 3.6 l engine
- Cab without glass roof: overall height 2.40 m
- Cab with glass roof: overall height 2.51 m



ELIOS 220

- 85 hp
- 3.6 l engine
- Cab without glass roof: overall height 2.40 m
- Cab with glass roof: overall height 2.51 m



ELIOS 210

- 75 hp
- 3.4 l engine
- Cab without glass roof: overall height 2.40 m
- Cab with glass roof: overall height 2.51 m



ELIOS 210

- 75 hp
- 3.4 l engine
- Platform: overall height 2.64 m or 1.89 m with roll bar retracted

Engines: powerful and environmentally friendly.

The modern engine technology in the ELIOS 240-220 complies with Stage V emissions standards in the 85 to 103 hp range. The design of the bonnet improves the view of the front loader or attached implements.

The environmentally friendly ELIOS 210 develops its 75hp efficiently, using only diesel. No need for additional fluids - it couldn't be easier.

Working area: clearly arranged and comfortable.

The glass roof in the cab version provides greater safety and comfort during front loader operations. Without the glass roof, the ELIOS can easily negotiate very low building entrances. The platform version is just 1.89 high with the roll bar retracted - making it ideal for use in greenhouses.

The easy way to get more done.	02
Reliability and simplicity	06
Performance and versatility	08
CLAAS POWER SYSTEMS	10
Engine	12
Transmission and PTO	14
Construction	16
Hydraulics and linkage	18
Front loaders	20
Comfort	22
Cab	24
Right-hand control panel	26
Maintenance	28
Development and manufacturing	30
CLAAS Service & Parts	32
Features	34
Technical data	35

Discover the new
ELIOS 200.
elios.claas.com



Scan me.

Reliability. Always ready for work.

The ELIOS 200 concept is based on simple, robust engineering. A sturdy, straightforward machine with mainly mechanical components guarantees optimum reliability for several years.

You can count on the quality of the ELIOS 200. Put your faith in the high-quality components, the meticulous workmanship and of course, the round-the-clock CLAAS Service – every single day.



Outstanding manufacturing quality makes the ELIOS 200 absolutely reliable.
Page 30



Long intervals and good accessibility reduce maintenance costs and downtimes.
Page 28



The 75 hp engine in the ELIOS 210 needs no additives. The fuel tank is all it takes.
Page 12



Mainly mechanical control systems make for minimal adjustments.
Page 26



The integrated exhaust gas aftertreatment system and lowered bonnet provide an unrestricted all-round view.
Page 24

Simplicity. Work more efficiently.

The ELIOS 200 is ergonomically designed for ease of use. Direct, mainly mechanical control systems prevent operator errors. Even inexperienced drivers will soon feel at home.

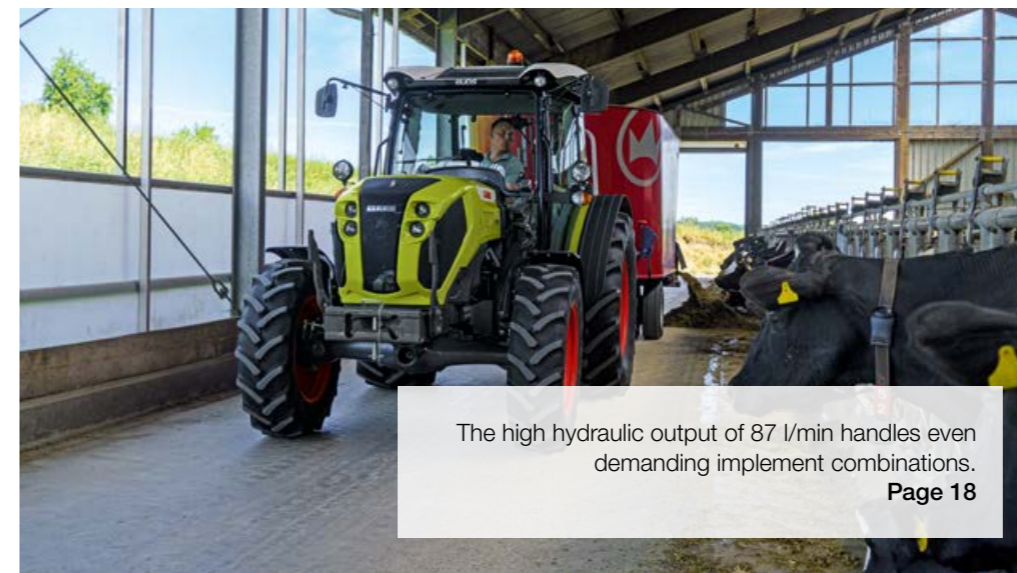
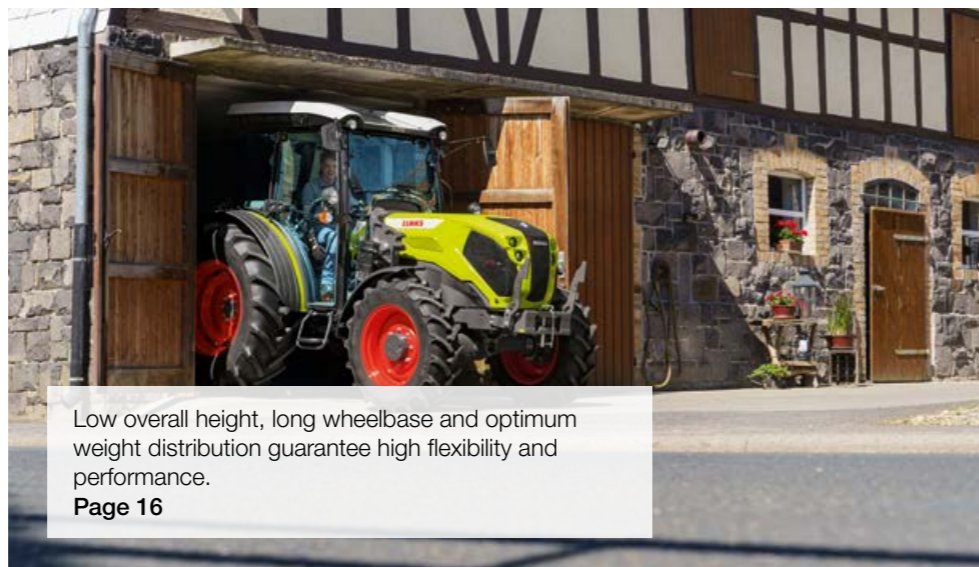
With its spacious interior, adjustable steering wheel and generous field of view, the ELIOS 200 provides a comfortable working environment. So you can relax and focus on the job in hand – your implement, your livestock or your crops.

Versatile and powerful assistant.

Versatility. Saving you time.

With a height from 2.40 m and a turning radius of 3.51 m, the ELIOS 200 can go anywhere and manoeuvre in the tightest corners of your yard. And with a low weight starting at 3.3 t, it leaves virtually no tracks when harvesting hay or crop spraying.

With numerous factory-fitted options such as front linkage, front PTO or front loader, you can tailor your ELIOS 200 precisely to your needs.



Performance. Be more productive.

The lively engine, evenly distributed gears and high hydraulic output of up to 87 l/min are key to the efficiency of the ELIOS 200. The engine runs smoothly and powerfully at all speeds.

The transmission with REVERSHIFT and TWINSHIFT provides the right gear for any situation.

CPS | CLAAS POWER SYSTEMS

Our drive system: the perfect interplay between optimal components.

Your CLAAS machine is much more than the sum of its individual parts. Top performance is only possible when all parts are ideally matched and work together optimally.

In CLAAS POWER SYSTEMS (CPS), we have brought together top-quality components to create an intelligent drive system that sets new standards. Full engine output only when you need it. Drives that are suited to the way your machines are used. Fuel-saving technology which quickly pays off.





ELIOS 200 – constant output.

The CLAAS-specific engine performance curve provides full torque in a wide engine speed range, guaranteeing constant output and power delivery when they are needed. This makes it easy to save fuel when working at low engine speed and maximum torque with the ECO PTO, or to work at rated speed with a full reserve. The high efficiency level eliminates the need for frequent gear changes.

The ELIOS comes with an engine air pre-warmer as standard. An electronic cold-start kit which starts the engine gently and reliably at temperatures down to -30°C is also available as an option.

Precise work at just the right speed.

The ELIOS 200 features an electronic common rail injection and one engine speed memory as standard. A second speed memory is available as an option. The desired engine speed can be selected at the press of a button, while two further buttons are provided for finer adjustment – especially helpful for PTO work.

ELIOS	240	230	220	210
Maximum output in hp ¹	103	92	85	75
Maximum torque in Nm ¹	406	366	334	309

¹ ECE R 120

ELIOS 240-220 – strong at heart.

Under the bonnet, the ELIOS 240-220 features FPT (Fiat Powertrain Technologies) engines with a cubic capacity of 3.6 l and all the latest technology.

- Viscous fan
- 1,800 bar high-pressure common rail injection
- Turbocharger
- Intercooler
- Complies with Stage V emissions standard thanks to DOC catalytic converters, diesel particulate filters (DPF) and SCR selective catalytic reduction

The 3.6 l cubic capacity guarantees low fuel consumption. When combined with a well-balanced 4-cylinder engine, this ensures that the tractor runs very smoothly with low noise levels and a long service life.

Despite its compact format, the ELIOS with viscous fan and the latest injection and emission control technology is superbly equipped for efficient operation.

Stage V for clean exhaust emissions.

In the Stage V-compliant ELIOS 240-220, all components of the exhaust gas aftertreatment system have been cleverly incorporated to ensure easy access to the engine compartment and maintenance points. The diesel oxidation catalytic converter (DOC), diesel particulate filter (DPF) and selective catalytic reduction (SCR) are neatly combined in a single element which follows the smooth lines of the bonnet. This gives you an uninterrupted view to the front and to the wheels. The 95 l fuel tank and 10 l urea tank provide enough range for long working days.



ELIOS 210.

It couldn't be easier.

What distinguishes the ELIOS 210 from other ELIOS models is the design of the bonnet. But the biggest difference is underneath; the 3.4 l engine packs 75 hp and complies with Stage V emissions standards without needing any additional additives – thanks to the latest technology and EGR systems.

- Viscous fan
- 1,600 bar high-pressure common rail injection
- Turbocharger
- Intercooler
- Complies with Stage V emissions standard without needing additional additives thanks to a diesel particulate filter, DOC catalytic converter and external, cooled exhaust gas recirculation (EGR)



Two transmission options.

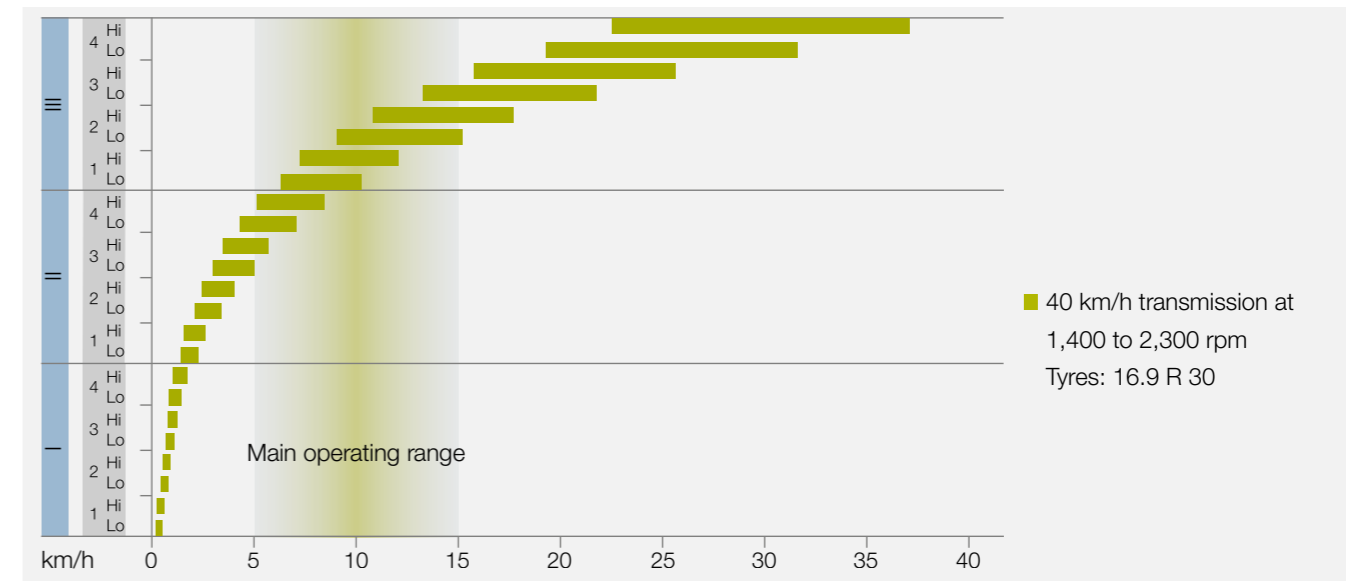
With two transmission variants to choose from, the ELIOS always offers the perfect solution for your needs:

- 24 F / 24 R with mechanical reverser and splitter
- 24 F / 12 R with REVERSHIFT clutchless reverser and TWINSHIFT two-stage powershift

Four-wheel drive is push-button-activated. To eliminate unnecessary tyre wear, four-wheel drive is automatically engaged or disengaged at 14 km/h.



Choose a mechanical splitter on the right next to the steering wheel or the easy-to-use TWINSHIFT two-stage powershift which is operated from the gear-shift lever



The 24 gears deliver the ideal speed for all types of operation. Specialist applications are tackled to perfection as the ELIOS has a minimum ground speed of 500 m/h at rated engine speed. The TWINSHIFT powershift transmission can be activated with ease via a push button on the gear knob. All ELIOS transmissions have been developed to ensure low power losses.

Thanks to the REVERSHIFT clutchless reverser you can almost forget the clutch pedal: the clutch button on the shift lever offers numerous advantages, especially during transport work. REVERSHIFT also enables you to change direction quickly and smoothly – particularly important when working with a front loader.

Powerful drive. The PTOs.

The ELIOS comes with a range of PTO options, including a 540 ECO PTO with reduced engine speed. This option reduces diesel consumption and minimises noise levels during light PTO work. A separate ground speed PTO for use with trailers is also available.

- 540 ECO and 540 rpm
- 540 and 1,000 rpm
- Ground speed PTO available for all configurations

PTO engagement is hydraulically supported as standard. When combined with the REVERSHIFT transmission, the PTO is engaged electronically.



The reverser for mechanical reversing and the electronic REVERSHIFT are handily positioned to the left of the steering wheel

With REVERSHIFT: the electronic clutch is operated by pressing a button on the gear lever

CLAAS tractor concept.

Compact, stable and manoeuvrable.

Playing it safe.

Optimum weight distribution for everyday jobs with the front loader or heavy front and rear attachments, such as wood chippers or verge mowers, ensures safe handling on the road and in the field.

A low centre of gravity really comes into its own on difficult terrain such as sloping ground, giving the ELIOS tractors excellent stability. The maximum track width of 2,310 mm further reinforces this effect. Together with the balanced weight distribution, this ensures exceptional safety. And with a low unladen weight starting at 3.26 t, soil-friendly, fuel-efficient work is a given.

Sufficient ground clearance is yet another requirement for machines working in the field, whether for driving over swaths during haymaking or when negotiating beds or ridges in vegetable cultivation – here, too, the ELIOS is a winner.

Safety first.

The braking system is designed to cope with the maximum permissible gross weight of 5.1 t with optimum safety. Four-wheel drive engages automatically during braking to bring the entire tractor safely to a standstill.

Good manoeuvrability and a low centre of gravity.

A long wheelbase combined with optimum weight distribution and a compact overall length guarantee superb flexibility and performance.

Long wheelbase and excellent weight distribution.

- Low centre of gravity, perfect for working on slopes
- High ride comfort
- Good, safe road handling
- Higher lift capacity thanks to improved stability
- Higher tractive power and performance due to low ballast requirement
- Light on the soil and dynamic on the road thanks to a favourable power-to-weight ratio
- Optimises fuel consumption

Short overall length.

- Good manoeuvrability
- Good visibility
- Good guidance of front-mounted implements
- Compact and manoeuvrable thanks to a minimum turning radius of just 3.51 m
- Minimum external width from 1.65 m

Why settle for anything else?

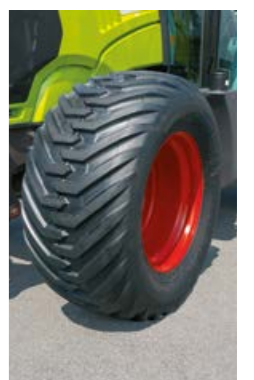
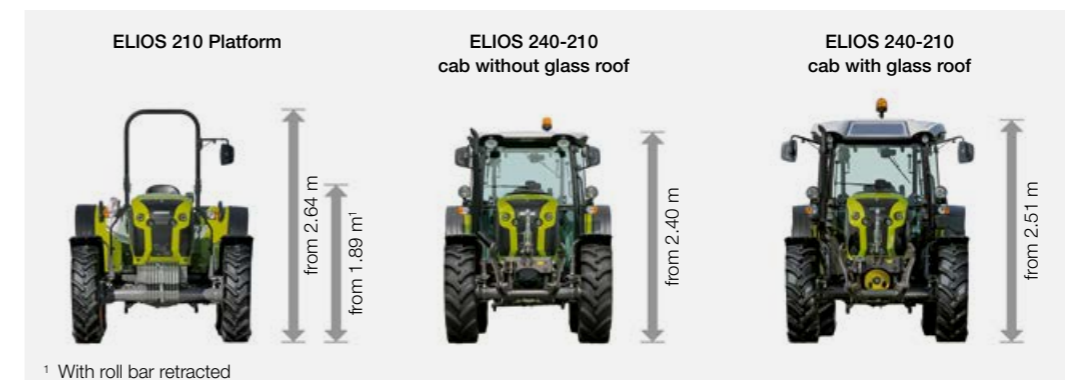
With the ELIOS 200, you're ideally equipped for municipal work, horticulture, equestrian work, vegetable production and viticulture too.

The platform version of the ELIOS 210 has a height of just 1.89 m with the roll bar retracted and 320/85 R 36 tyres. It's the perfect choice for working in low buildings and greenhouses. The ELIOS 240-210 with cab without glass roof is only 2.40 m high – so can pass easily through low doorways.



The ELIOS 200 is your ideal partner in very wide orchards or vineyards. The optional narrow front axle with corresponding tyres gives an overall width of just 1.65 m, yet the ELIOS 200 retains the cab size of a standard tractor.

CLAAS supplies optional factory-fitted Trelleborg turf tyres (sizes: 600/55-26.5 rear and 600/55-26.5 front) to enable the ELIOS to be driven over sensitive grass cover or wet subsoil in parks and on sports fields without damaging the precious turf – all year round (not available for the ELIOS 210).





With a maximum lift capacity of 3.2 t, the ELIOS is more than able to cope with the challenges of day-to-day work



The mechanical rear linkage controls are ergonomically positioned to the right of the driver's seat



For implement attachment, the mechanical rear linkage can be operated externally at the rear of the tractor



The optional front linkage with 3.2 t lift capacity and the front PTO extend the range of ELIOS applications



Up to four hydraulic connections and a free-flow return are available at the front to the right of the cab



The hydraulic two-line trailer brake enables you to remain flexible during transport operations

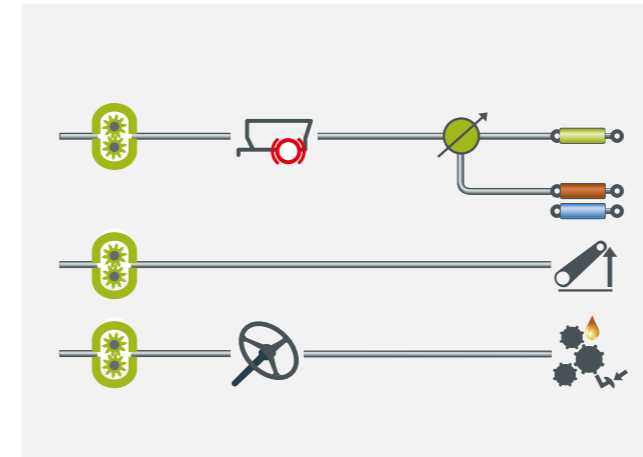
Great lift capacity. Great potential.

With a maximum lift capacity of 3.2 t at the ball ends of the rear linkage and up to 3.2 t (2.8 t with the ELIOS 210) on the front linkage, the ELIOS is ideally equipped to face the challenges of day-to-day work.

The mechanical control elements for the rear linkage are placed close to the driver and easy to operate. The adjustable lower stop ensures that the required working depth is achieved after every turn at the headland.

The factory-fitted front hydraulics and 1000 or 540 ECO front PTO are seamlessly integrated into the tractor. When folded up, the front linkage is highly compact with a minimal overhang. The tractor rear offers a wide range of hitching options, including, for example, a long ladder hitch with drawbar or a pick-up hitch.

Expand your tractor's range of applications without compromising on manoeuvrability with the CLAAS front loader – working together in perfect harmony.



Hydraulic output on demand.

The ELIOS 200 is equipped with two hydraulic pumps as standard, which together deliver a flow of 87 l/min. One hydraulic circuit supplies the steering system at 27 l/min, while a second circuit supplies the rear linkage and spool valves at 60 l/min.

Three hydraulic pumps are optionally available to give a maximum combined flow of 114 l/min. With this configuration, the first circuit supplies the steering system and the second circuit the rear linkage, both at 27 l/min.

The third pump supplies the hydraulic spool valves at 60 l/min. This enables overlapping actions to be performed simultaneously or implement combinations with extremely high hydraulic requirements to be operated. Valuable fuel savings can also be achieved by operating at low engine speeds while maintaining a high hydraulic output.

The hydraulic connections mounted to the left of the top link make it easy to connect rear implements. The colour-coding and stickers makes the connections easy to identify. The oil leak container keeps the rear of the tractor clean. Two front hydraulic functions can be controlled by the four connections located at the front to the right of the cab.

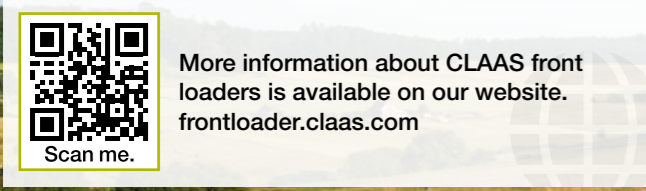
When using a hydraulic motor in continuous operation for example, the free-flow return (orange connection) available at the front or rear helps to prevent the oil from overheating.



Up to three mechanical spool valves.

The ergonomic control elements of the mechanical spool valves are easy to operate. The float position enables the mower to follow the ground contours. The simple mechanism allows you to lock any valve in neutral position. If you need to reduce the speed of a hydraulic motor, simply limit the flow rate of the third spool valve from the cab with one hand.

A perfect fit. CLAAS front loaders.




No compromises.
Even with front loader work.

With front loaders, the connection to the tractor is crucial for safe, fast loading operations. So when developing the ELIOS series, we made sure that the attachment brackets were fully integrated into the overall tractor concept.

The brackets are positioned a long way back, providing stability during heavy work. A robust bolted connection made from high-strength cast steel joins the front loader bracket to the engine half frame – without compromising the steering lock or ease of maintenance. The design of the attachment bracket means that a CLAAS front loader can easily be retrofitted at a later date.



PROPILOT operation.

The CLAAS front loader on the ELIOS 200 is operated via the PROPILLOT in the right-hand console. This multi-functional single-lever control system, which uses Bowden cables, was developed specifically for operating a front loader and has proven its worth in everyday use.

Clear benefits.

- Front loader brackets and controls can be factory-fitted
- All cabs are tested to FOPS guidelines (Falling Object Protective Structure)
- PROPILLOT (mechanical operation using Bowden cables)
- Option of PCH hydraulic self-levelling on FL front loaders or PCM mechanical self-levelling on FL C and FL E models
- FITLOCK system for quick and convenient fitting/removal of the front loader
- MACH quick-attachment coupler for electrical and hydraulic connections
- FASTLOCK hydraulic locking for implements
- SPEEDLINK for automatic locking and connection of all hydraulic and electric connectors on the implement
- SHOCK ELIMINATOR vibration damping
- Wide selection of attachments
- And not forgetting the full CLAAS service

ELIOS	240	230	220	210
FL	60	60	60	60
FL C	40, 60	40, 60	40, 60	40, 60
FL E	40, 60	40, 60	40, 60	40, 60

FITLOCK system for rapid attachment/removal and MACH quick-release coupler for electric and hydraulic connections



A comfortable working environment helps boost productivity.

The cabin in the ELIOS 200 combines simplicity with ergonomics. Special emphasis has been placed on the logical and ergonomic layout of the mainly mechanical control elements. Even inexperienced drivers soon feel at home and are less fatigued.

- Cab with slim pillars for outstanding all-round view
- Cab without glass roof for a low overall height or cab with glass roof for an outstanding view of the front loader
- Easy access to the cab via the steps
- A quiet, comfortable workplace



More than just a workplace. The cab.



Cab with glass roof.

Available for ELIOS 240-210.



Cab without glass roof.

Available for ELIOS 240-210.



Platform.

Available for ELIOS 210.



Everything in view, everything to hand.

Welcome to the ELIOS 200 cab: the wide-opening door, comfortable handles and self-cleaning step provide easy access to the cab, while a range of seat and steering wheel adjustment options guarantee every driver a comfortable working environment. The air-suspended seat and air-conditioning system provide an even greater degree of comfort. An active carbon filter to protect the driver during crop spraying can be installed instead of the conventional cab filter.

Large windows in the ELIOS 200 cab provide an outstanding all-round view. The rear windows are curved for an optimum view of rear implements, while the glass roof gives you an almost unrestricted view of the raised front loader.

Four work lights illuminate the working area at night or in poorly lit stalls. The main headlights are available in LED versions (except ELIOS 210).



A comfortable seat with air suspension supports your back during long working days

ELIOS 210 Platform.

The platform version of the ELIOS 210 without a cab also has plenty to offer. The roll bar can be retracted, reducing the overall height to just 1.89 m. When combined with the optional downward-directed exhaust pipe, this allows the ELIOS to access even the lowest greenhouses, buildings and orchards.



The heating and ventilation system has a four-stage fan and several adjustable air jets. A controllable air-conditioning system is also available.



The large doors open wide without protruding too far beyond the sides of the vehicle, enabling you to climb on board easily even in confined spaces in buildings



The front windscreen opens for natural ventilation



The steering column tilts and has telescopic height adjustment so it can be adapted to the driver's seating position



On the easy-to-read instrument panel you can see all the key information at a glance. The digital display shows additional operating parameters.



As well as the large standard mirror, a wide-angle mirror is also available for enhanced road safety

Simply intuitive. The side console.

Sit down and away you go.

If you don't need a top-end model, the ELIOS 200 is a sound alternative. The individual controls are mainly mechanical, ergonomically arranged and completely self-explanatory.

The ELIOS 200 with its thoughtful comfort features makes life that bit easier:

- Up to two electronic engine speed memories
- Electrical engagement of the four-wheel drive and differential lock
- Hydraulically or electronically supported rear PTO activation

- 1 Gear shifting
- 2 Range shifting
- 3 PROPILOT front loader control
- 4 Rear linkage operation
- 5 Mechanical spool valve operation
- 6 Activation of electronic front and rear PTO (depending on specification)
- 7 Setting and activation of up to two engine speed memories
- 8 Electronic hand throttle
- 9 Electronic four-wheel drive and differential lock engagement
- 10 25A socket and cigarette lighter
- 11 Pre-selection of PTO speed and ground PTO
- 12 Hydraulically supported rear PTO activation



Electrical four-wheel drive and differential lock engagement: the speed-dependent safety cut-out prevents operating errors



PTO work is very simple with the ELIOS, as the engine-speed memory is part of the standard specification



The PTO is engaged with hydraulic support as standard. Electronic PTO engagement is available as an option in machines with REVERSHIFT.



Ready in an instant.

Daily maintenance work should be as straightforward as possible – because we know from experience that nobody enjoys doing things that are complicated or inconvenient.

- The one-piece bonnet opens at the press of a button, providing access to all the engine maintenance points
- The oil can be checked and topped up on the right-hand side of the ELIOS 200 when the bonnet is closed

– All daily maintenance tasks can be carried out without tools

Long oil-change intervals (engine 600 h, transmission and hydraulics 1,200 h) save a great deal of time and money. This means that less valuable working time is lost during the season and the tractor is where it should be – at work.



You can slide out the radiator and remove the radiator screen in no time for inspection and cleaning



The PowerCore® air filter is located in easy reach under the bonnet at the front and reduces the cleaning interval



The cab air filter is easy to access from outside for cleaning and keeps the air in the cab fresh at all times



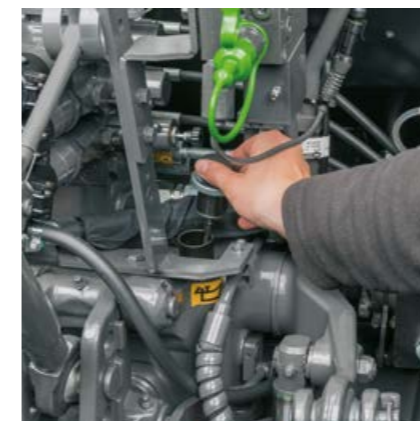
The oil filters in the engine are easy to reach even with a front loader bracket



The 95 l diesel tank and the 10 l urea tank provide enough range for long working days



The oil level can be checked and topped up on the right-hand side of the ELIOS 200 when the bonnet is closed



You can check the transmission and hydraulic oil level in a sight glass at the rear



The battery isolating switch is conveniently located on the left access step (except ELIOS 210)



The tool box on the rear mudguard ensures that accessories are always to hand



Developed over many years.

The production facility is not the only factor that determines the success of an outstanding product – it's also about how all the carefully matched components work perfectly together. The Rovigo factory has been developing and manufacturing compact tractors for working in vineyards, orchards and other specialist crops for around 35 years.

High-quality manufacturing.

When it comes to manufacturing the ELIOS, quality that lasts is not our sole priority. Your satisfaction is paramount. Since 2009, more than 10,000 CLAAS tractors have rolled off the assembly line – three generations in all.

Intelligent production processes and seamless quality controls ensure outstanding manufacturing quality. This is how we ensure that you can completely rely on your tractor at every minute of the day.



Discover more about production at the Rovigo factory.



Whatever it takes.
CLAAS Service & Parts.



CLAAS Service & Parts
is there for you 24/7.
service.claas.com

Scan me.



Safeguard your machine's reliability.

Increase your operating reliability, minimise the risk of breakdown and repair. MAXI CARE offers you predictable costs. Create your own individual service package to meet your particular requirements.



Specially matched to your machine.

Precision-manufactured parts, high-quality consumables and useful accessories. Choose our comprehensive product range to be certain of receiving exactly the right solution to ensure 100% operating reliability for your machine.



For your business: CLAAS FARM PARTS.

CLAAS FARM PARTS offers one of the most comprehensive ranges of multi-brand parts and accessories for all agricultural applications on your farm.



Global supply.

The CLAAS Parts Logistics Center in Hamm, Germany, stocks almost 200,000 different parts and has a warehouse area of over 183,000 m². This central spare parts warehouse delivers all ORIGINAL parts quickly and reliably all over the world.



Your local CLAAS distributor.

Wherever you are, you can count on us to always provide you with the service and the contact people you need. Your CLAAS partners are on hand in your local area, ready to support you and your machine around the clock. With know-how, experience, commitment and the best technical equipment. Whatever it takes.

Compelling features that get more done.

Reliability.

- The ELIOS 200 concept is based on simple, robust engineering
- The 75 hp engine in the ELIOS 210 needs no additives
- Long intervals and good accessibility reduce maintenance costs and downtimes
- MAXI CARE increases your operational reliability and minimises the risk of repairs and breakdowns
- The outstanding manufacturing quality of the ELIOS means you can rely on your tractor every single day
- You CLAAS partner is always on hand to support you and your machine – with expertise, experience, commitment and the best technical equipment

Comfort and convenience.

- Direct, mainly mechanical control systems prevent operator errors
- The ergonomic design has everything you could wish for
- Integrating the exhaust gas aftertreatment system beneath the flat bonnet leaves an unrestricted view to the front
- Spacious interior
- Adjustable steering wheel and large field of view
- With PROPILOT you can operate the front loader with ease and precision
- Cab with or without glass roof

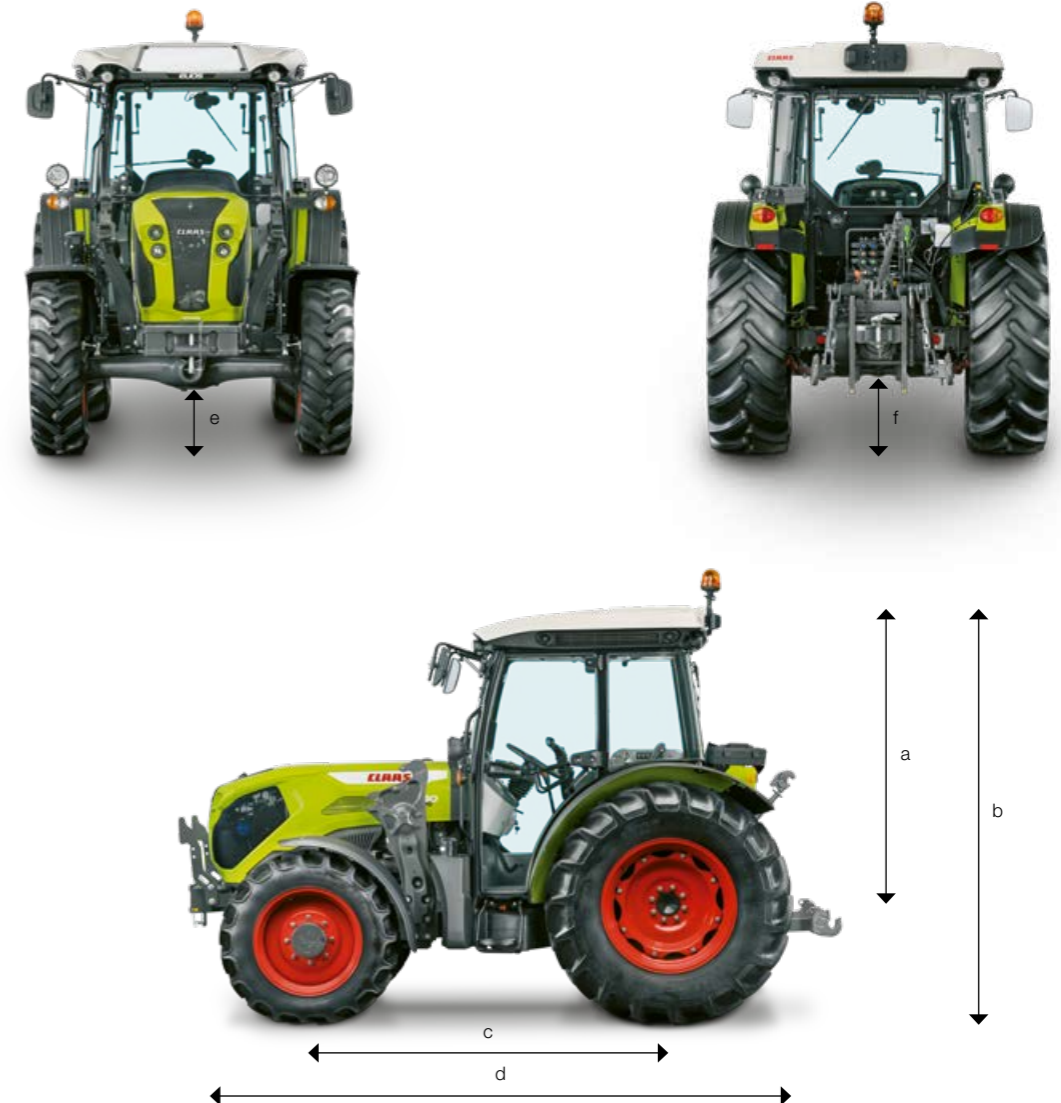
Versatility.

- The low centre of gravity guarantees excellent stability even on slopes
- The small turning radius of just 3.51 m makes for speed and agility around the farm
- The ELIOS 200 and the CLAAS front loader are a perfect match
- The minimum external width from 1.65 m is perfect for working in vineyards and orchards
- The platform version (ELIOS 210) is just 1.89 m high with the roll bar retracted – ideal for use in greenhouses and low buildings.
- Front loader, front linkage and front PTO extend the range of applications

High performance.

- The smooth 4-cylinder engine offers high power reserves in all speed ranges
- With 8 gears in the main operating range between 5 and 15 km/h, the ELIOS always has the power where you need it
- The REVERSHIFT clutchless reverser on the steering wheel makes turning manoeuvres quick and simple
- The TWINSHIFT powershift speed increases the tractive power by 20% at the press of a button
- The minimum speed of 500 m/h allows you to work efficiently in specialist crops
- The high hydraulic output of 87 l/min handles even demanding implement combinations

ELIOS		240	230	220	210
Dimensions and weights					
With oil and fuel but without driver					
Centre of rear axle to top of cab without glass roof (a)	mm	1730	1730	1730	1730
Centre of rear axle to top of cab with glass roof (a)	mm	1840	1840	1840	1840
Centre of rear axle to top of roll bar (a)		-	-	-	1965
Centre of rear axle to top of retracted roll bar (a)		-	-	-	1215
Overall height (b): with 380/85 R 30 rear tyres					
Cab with glass roof	mm	2515	2515	2515	2515
Cab without glass roof	mm	2405	2405	2405	2405
Platform with roll bar	mm	-	-	-	2640
Platform with roll bar retracted	mm	-	-	-	1890
Wheelbase (c)	mm	2186	2186	2186	2156
Length (without front ballast, without front linkage) (d)	mm	4041	4041	4041	3814
Ground clearance, front axle (e)	mm	345	345	345	345
Ground clearance, rear axle (excl. drawbar) (f)	mm	470	470	470	470
Minimum external width: with 320/85 R 36 rear tyres	mm	1644	1644	1644	1644
Weight without ballast (platform/cab)	kg	- / 3550	- / 3550	- / 3550	3010/3260
Max. permissible gross weight	kg	5100	5100	5100	5100
Max. additional front ballast without front linkage	kg	420	420	420	420



ELIOS		240	230	220	210
Engine					
Manufacturer		FPT	FPT	FPT	FPT
Number of cylinders		4	4	4	4
Cubic capacity	cm ³	3600	3600	3600	3400
Common rail injection	bar	1800	1800	1800	1600
Rated output (ECE R 120) ¹	kW/hp	72/98	67/91	61/83	55/75
Max. output (ECE R 120) ¹	kW/hp	76/103	68/92	62/85	55/75
Rated output type approval value ²	kW	72	67	61	55
Max. output type approval value ²	kW	76	68	62	55
Max. torque (ECE R 120) ¹	Nm	406	366	334	309
Nominal engine speed	rpm	2300	2300	2300	2300
Engine speed at maximum output	rpm	2000	2000	2000	2000
Engine speed at max. torque	rpm	1500	1500	1500	1500
Viscous fan		●	●	●	●
Max. fuel tank capacity	l	95	95	95	95
Max. urea tank capacity	l	10	10	10	–
Oil-change interval	h	600	600	600	600
Transmission					
Number of gears		4	4	4	4
Number of ranges		3	3	3	3
24 F / 24 R with mechanical reverser and splitter		●	●	●	●
24 F / 12 R with REVERSHIFT electronic reverser and TWINSHIFT two-stage powershift		○	○	○	○
Min. speed at 2200 rpm	km/h	0.5	0.5	0.5	0.5
Max. speed	km/h	40	40	40	40
Engine speed at maximum speed	rpm	2300	2300	2300	2300
Rear axle					
Electrohydraulically activated differential locks		●	●	●	●
Max. rear tyres		540/65 R 30	540/65 R 30	540/65 R 30	540/65 R 30
Oil-change interval	h	1200	1200	1200	1200
Road safety					
Braking system (multiple discs in oil bath and automatic 4WD activation)		●	●	●	●
Hydraulic trailer braking system		○	○	○	○
PTO					
Electrohydraulic coupling			Hydraulically supported/electrohydraulic		
540 / 540 ECO		○	○	○	○
540 / 1000		●	●	●	●
Ground PTO		○	○	○	○
1 3/8" PTO stub, 6 splines		●	●	●	●

¹ Meets ISO TR 14396

² Performance data fit criteria for admissibility

CLAAS continually develops its products to meet customer requirements. This means that all products are subject to change without notice. All descriptions and specifications in this brochure should be considered approximate and may include optional equipment that is not part of the standard specifications. This brochure is designed for worldwide use. Please refer to your nearest CLAAS dealer and their price list for local specification details. Some protective panels may have been removed for photographic purposes in order to present the function clearly. To avoid any risk of danger, never remove these protective panels yourself. In this respect, please refer to the relevant instructions in the operator's manual.

All technical specifications relating to engines are based on the European emission regulation standards: Stage. Any reference to the Tier standards in this document is intended solely for information purposes and ease of understanding. It does not imply approval for regions in which emissions are regulated by Tier.

● standard ○ optional □ available – not available

ELIOS		240	230	220	210
Four-wheel drive front axle					
Electronic activation		●	●	●	●
Speed-dependent automatic 4-wheel drive		●	●	●	●
Self-locking differential		●	●	●	●
Optimum turning radius	m	3,51	3,51	3,51	3,51
Pivoting mudguards		○	○	○	○
Hydraulics					
Hydraulic pump for steering and transmission		●	●	●	●
Hydraulic output	l/min	27	27	27	27
2-pump hydraulic circuit		●	●	●	●
Hydraulic output to rear linkage and spool valves	l/min	60	60	60	60
3-pump hydraulic circuit		○	○	○	○
Hydraulic output to rear linkage	l/min	27	27	27	27
Hydraulic output to spool valves	l/min	60	60	60	60
Max. operating pressure	bar	190	190	190	190
Number of mechanical spool valves (min. / max.)		2-3	2-3	2-3	2-3
Flow control on one of the mechanical spool valves		○	○	○	○
Free-flow return		●	●	●	●
Rear linkage					
Max. lifting capacity at ball ends	kg	3240	3240	3240	3240
Continuous lift capacity at 610 mm	kg	2330	2330	2330	2330
Mechanical operation		●	●	●	●
External controls		○	○	○	○
Front linkage					
Max. lifting power	kg	3230	3230	3230	3230
Front PTO 1000		○	○	○	○
Front PTO 540 ECO		○	○	○	○
Vibration damping		●	●	●	●
Cat II lower link hooks		●	●	●	●
Cab					
Cab with/without glass roof		□ / □	□ / □	□ / □	□ / □
Platform		–	–	–	□
Driver's seat, mechanical suspension		●	●	●	●
Driver's seat, air suspension		○	○	○	○
Steering column, tilting and telescopic height adjustment		○	○	○	○
Heating		●	●	●	●
Air conditioning		○	○	○	○
Opening front windscreen		○	○	○	●
Opening rear window		●	●	●	●
Rear window wiper		○	○	○	○
Max. number of work lights, front/rear		2/2	2/2	2/2	2/2
25 amp socket		●	●	●	●

● standard ○ optional □ available – not available



CLAAS KGaA mbH
Mühlenwinkel 1
33428 Harsewinkel
Deutschland
Tel. +49 5247 12-0
claas.com

HRC / 352012000922 KK ME 0623